



Singapore Healthcare Management 2016

Patient Education Resources – Meeting Patients’ Health Information Needs

Tan Ai Meng, Assistant Director, Nursing
Fong Mew Keng, Nurse Manager
Pakrisamy Sarojini Devi, Nurse Manager
SingHealth Polyclinics



Polyclinics
SingHealth



INTRODUCTION

SingHealth Polyclinics (SHP) provides multidisciplinary input to build patient education into care delivery system ensuring all patients are offered the necessary knowledge and skills required to enable them participate in care decisions and care processes.



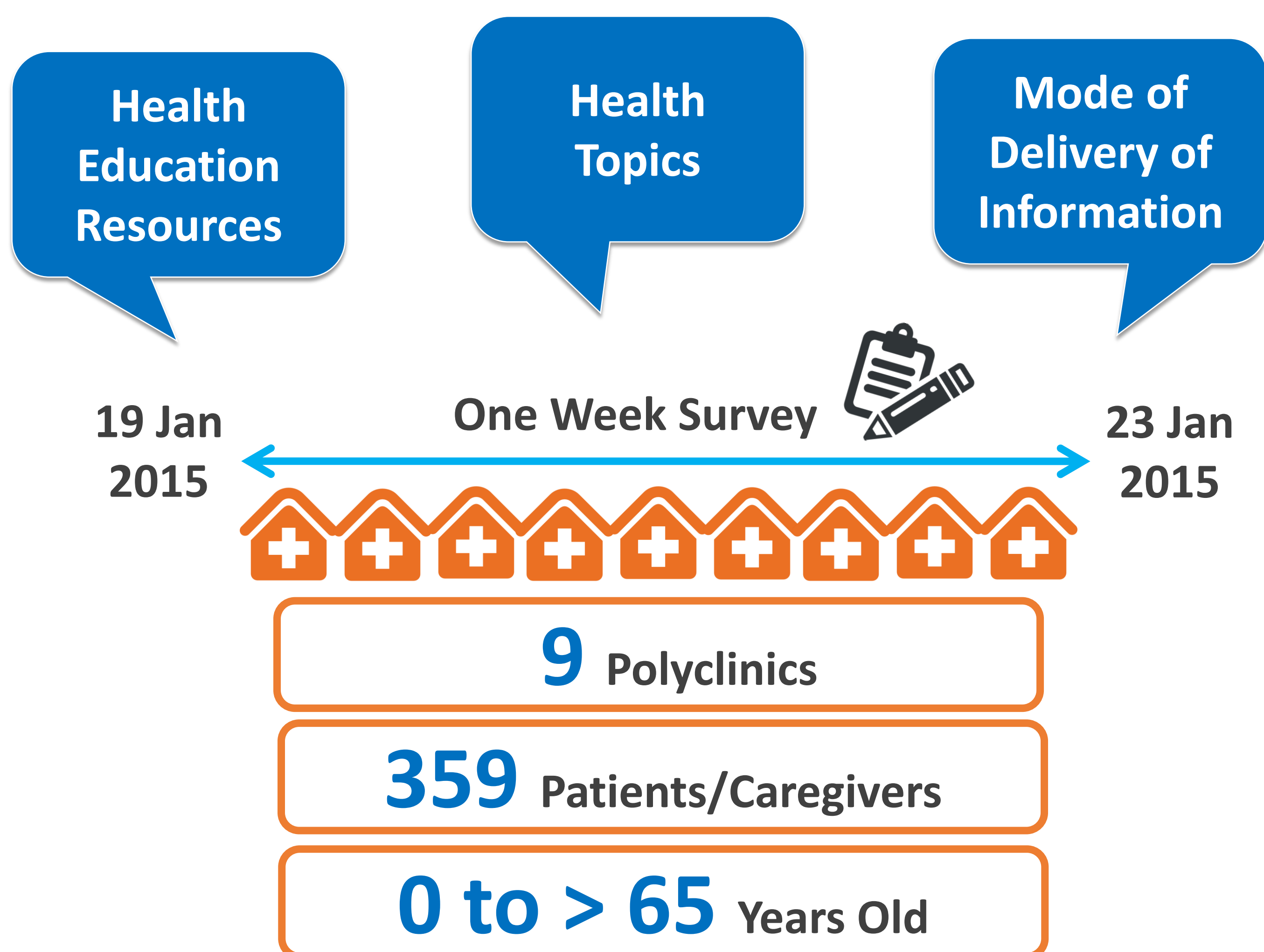
AIM

- To evaluate the effectiveness of health education materials in the clinics.
- To determine the preferred health topics and mode of education delivery.



METHODOLOGY

A set of questionnaires was developed and administered by the nurses to the patients/caregivers who attended the polyclinics.



RESULTS

Out of **359** Patient/Caregiver Respondents:



Wellness TV

71%



Health Educational Posters

65%

Popular Poster Topics

70% Infant Health

61% Women Health

50%

felt posters were informative and helped improve their health knowledge

Overall Popular Health Education Topics



Caring for Baby



Nutrition
Demonstration for
Child Weaning Diet



Eldercare



CONCLUSION

The survey had demonstrated the current health education needs of the patients and adequacy of health information.

SHP will continue to review health education needs of the patients, collaborate with various stakeholders and community agencies to build patient education capability.

