



**Singapore Healthcare  
Management 2016**

# Enterprise Workflow System (eWS) - Creating a Seamless Process to Increase Efficiency

Emily Sim, Ian Lee, Anna Wirija, Kamini Devi  
Accreditation and Licensing Department  
Division of Operations & Performance Management  
Singapore General Hospital (SGH)



Saravanan Krishnamurthy  
Integrated Health Information System (IHIS)



## INTRODUCTION

Singapore General Hospital (SGH) e-audit reporting system is named Enterprise Workflow System (eWS). This system is used to plan, initiate, conduct audit and manage improvement plans from the audit findings. It is primarily used by Accreditation and Licensing (A&L) Department to manage audit schedules and reports.

### ! PROBLEMS OF OLD SYSTEM?

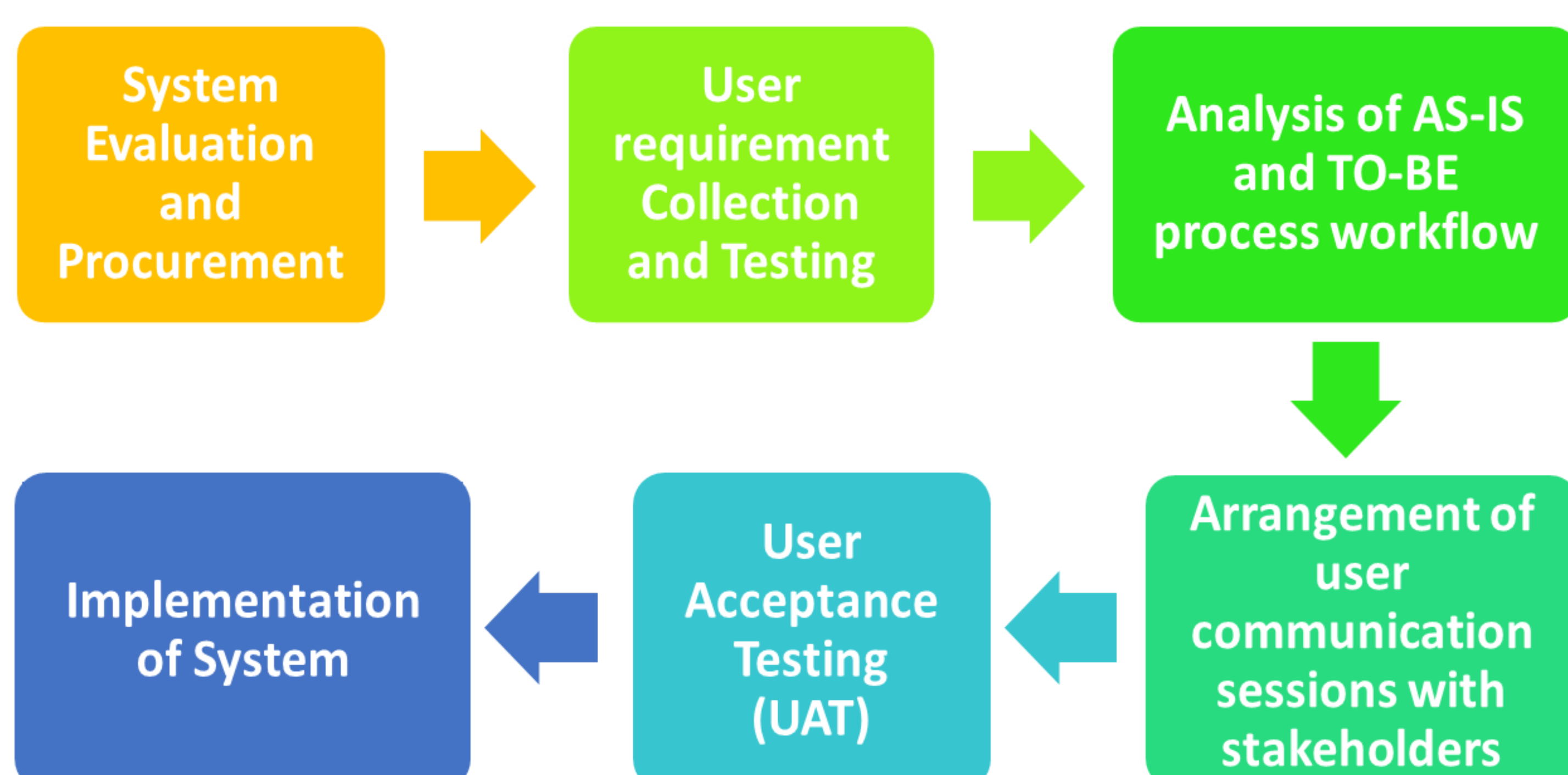
- Disorganized and complex user interface
- Long time taken to create audit reports
- Manual tabulation of audit reports
- High system maintenance cost



## AIM & METHODOLOGY

To implement an Internal Audit System leveraging on the Cintellate platform to plan audit schedules, create audit reports and monitor audit findings. A system to better align SGH's Hospital-level accreditations and Department-level certifications.

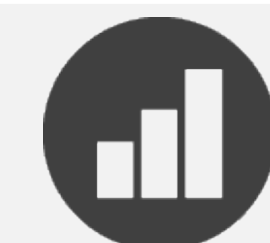
The team adopted a Project Management Methodology.



## CONCLUSION

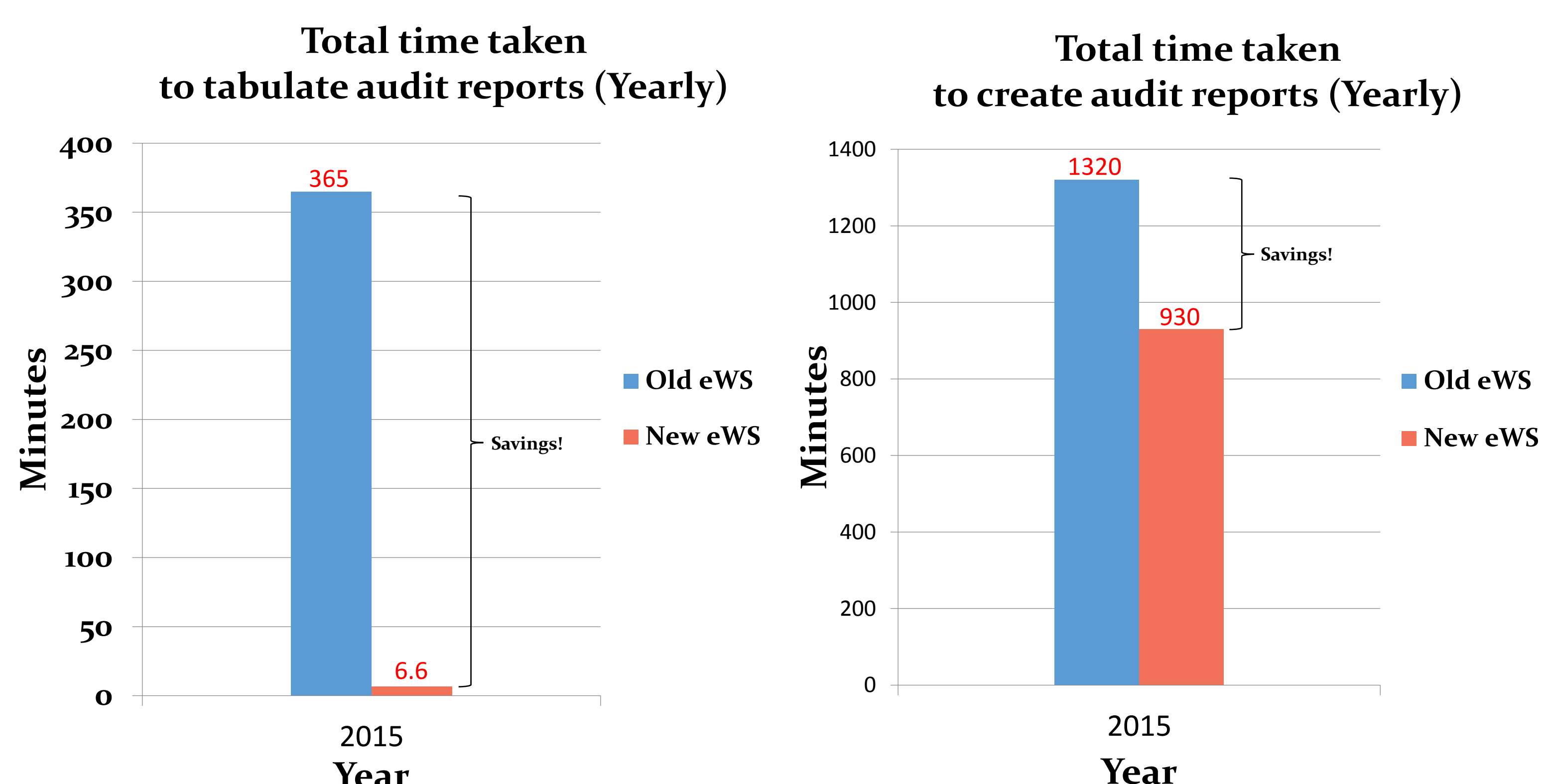
The enhanced eWS system has simplified the processes and shortened the time taken for scheduling, conducting and reporting of the audit activities. The total time to create and tabulate audit reports in a year has reduced by 30% and 98% respectively.

An automated audit management tool like this allows related departments to monitor and improve their internal processes, therefore contributing to the performance and continual improvement of SGH.



## RESULTS

Other than a new user interface with a simpler design and colour coding to ensure smooth navigation, the new eWS system has significantly increased the efficiency and productivity of SGH internal audit workflow.



With the new system in place, the total time to tabulate audit reports in 2015 has reduced significantly from 6 hours to 6 minutes. Savings of 6.5 hours is also seen in the total time to create audit reports.

### Status of Closure for Audit Findings

Start Date: dd/mm/yyyy  
End Date: dd/mm/yyyy

Classification	# Closed	# Open	Total
Discrepancy	XX	XX	XX
Observation			
EHS Audit Observations			

### Scheduled v/s Audited

Start Date: dd/mm/yyyy  
End Date: dd/mm/yyyy

	Scheduled	Audited	Balance
No of Department	xx	xx	xx
No of Department Under Tracer			
No of System Tracer			
Audit Scenarios		Audited	
Internal EHS Audit		xx	
Department Self Assessment			
Department Level Audit			
Department Pending Audits			
Remarks			

On top of it, the annual maintenance cost of the enhanced system has reduced from \$101,379 to \$17,682 (5 years average), equating to a 82.5% cost reduction.

