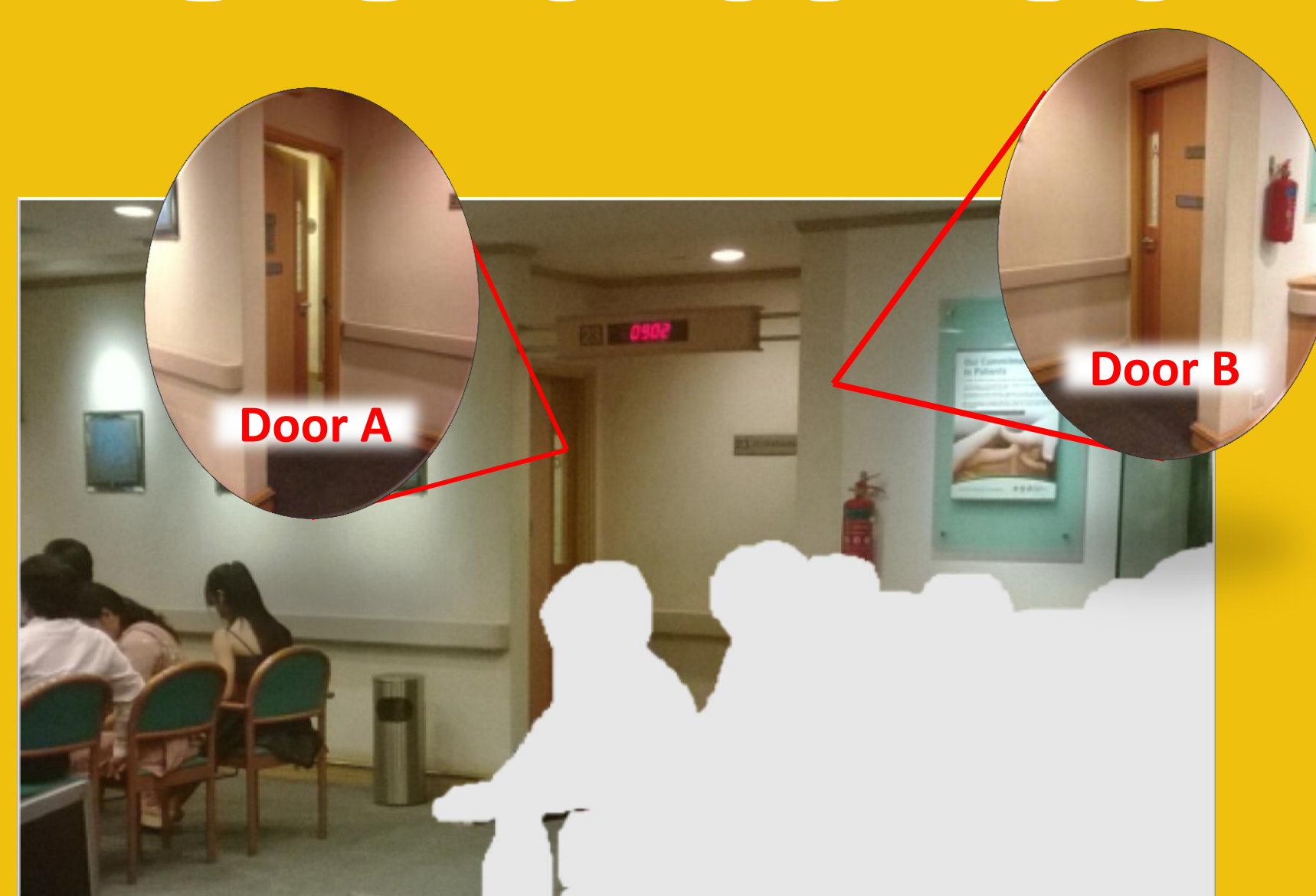


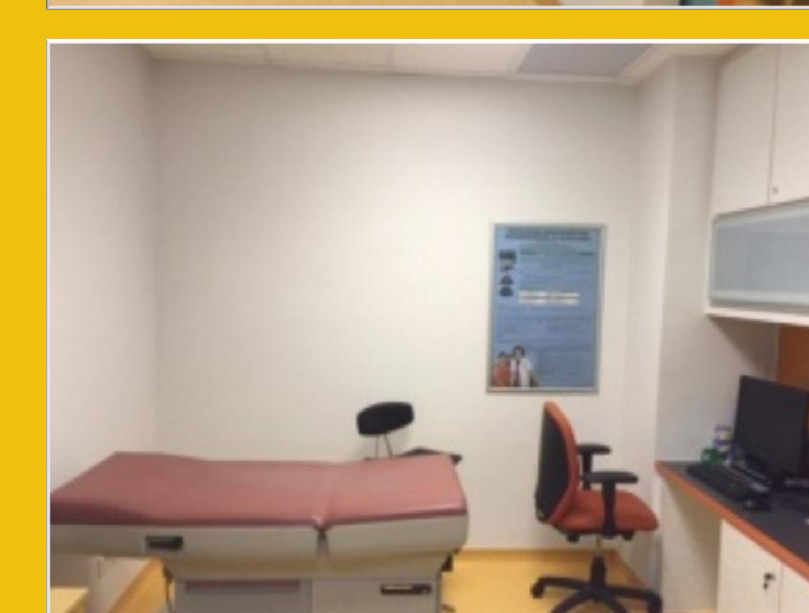
WHY THE CHANGE?

The Ultrasound Suite is a crucial service station for patients at the Obstetrics & Gynaecology (O&G) Centre; **patient confusion** with the double entrances (door A & door B) was once a common sight and **patient privacy** within the suite had room for improvement. With the Baby & Child Clinic residing in the Centre, **children running** among the patient waiting areas is inevitable and hence, increasing the **fall-risk** of O&G patients. As part of the Centre's 5-year renovation plan, the Ultrasound Suite and children playing corner have been prioritised as the areas for renovations.

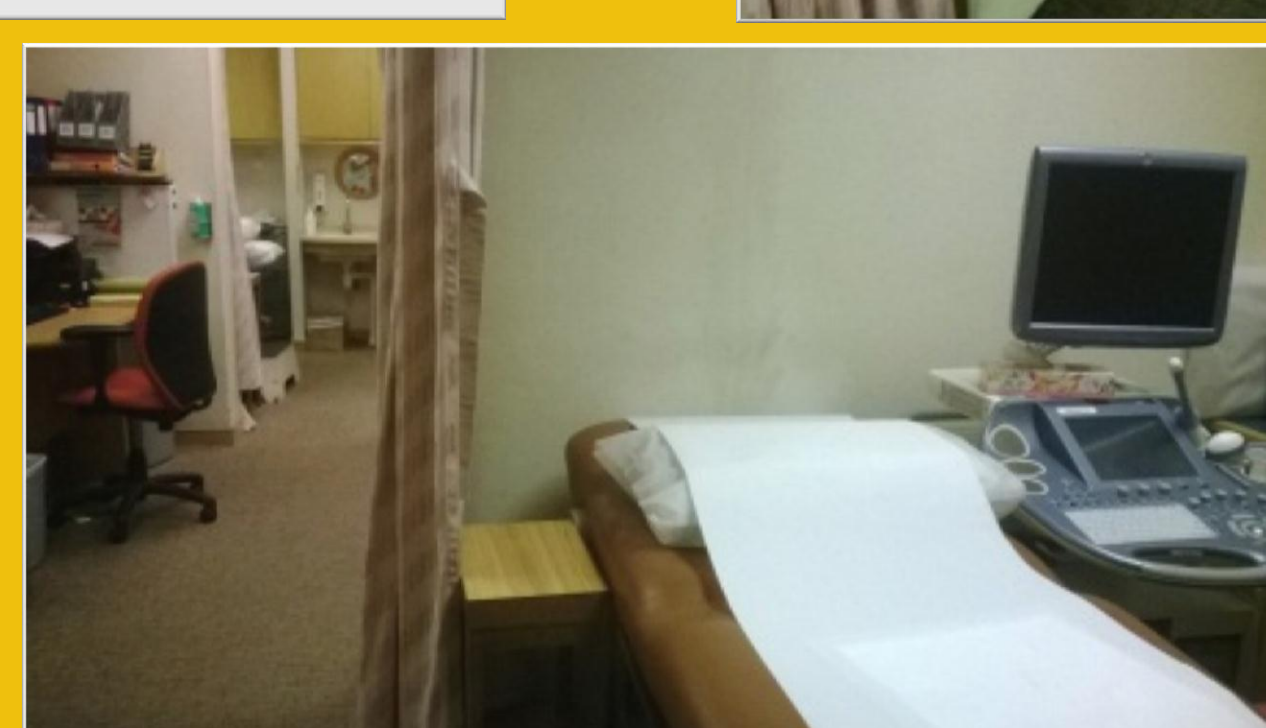
WHAT HAS CHANGED?



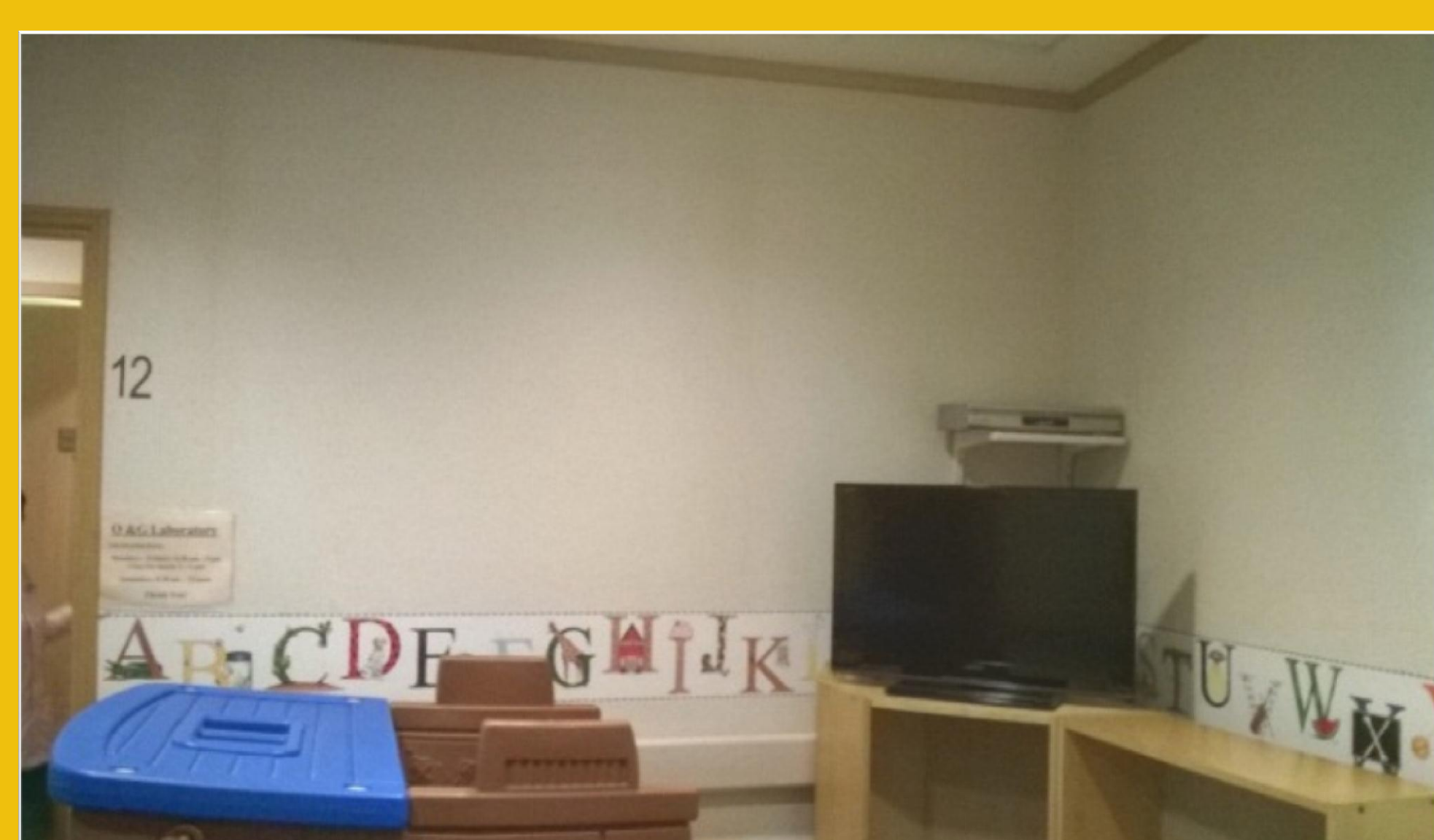
- 2 entrances to 1 main entrance
- Curtain-partition to sliding door-partition for each scanning room
- Wider corridors for easy access



BEFORE



AFTER



- New design with lively decorations and vibrant colours
- Installation of various playing panels
- Reorganization of space & facilities for multi-usage



AFTER THE CHANGE...

With 1 main Ultrasound Suite entrance and now sliding-door scanning rooms, patient experience during Ultrasound scanning has been enhanced with **improved patient privacy**. It is also noticeable that there is more **children engagement** at the playing corner with a wider variety choice of play and its vibrant decorations. Renovation of these areas not only improves both patient experience and safety, but also allows reorganization of facilities for **better space management and functionalities** of the same space.