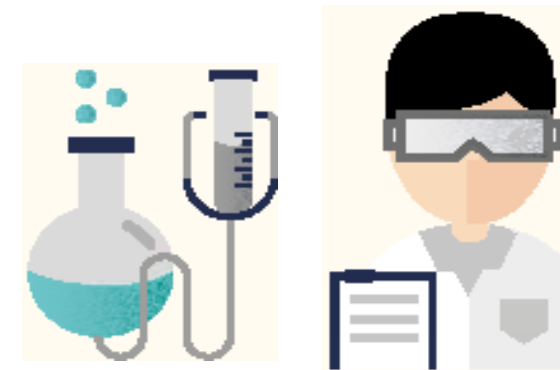


Cindy TAN<sup>1</sup>, John COE<sup>2</sup>, San Ling SI-HOE<sup>2</sup>, Chew Loong LIM<sup>1</sup>, Suan Jong FOO<sup>1</sup> & Kok Hian TAN<sup>1</sup>

1. Joint Office of Academic Medicine; 2. SingHealth Office of Research

## INTRODUCTION



The **Nurturing Clinician Scientist Scheme (NCSS)**, managed by Joint Office of Academic Medicine (JOAM), in collaboration with SingHealth Office of Research (OoR), was set up to nurture a pipeline of young clinicians within the SingHealth Duke-NUS Academic Medical Centre (AMC), to spur them onto gaining competencies and experience to become competitive in getting external grants, allowing them to embark on a sustainable research career.

NCSS is a key initiative to catalyse clinicians to embrace Academic Medicine and moving our AMC towards becoming a leading global AMC.



To enhance the NCSS to be more inclusive to a wider spectrum of clinician researchers including Clinician Investigators (CIV), Clinician Innovators (CIN), Nurses and Allied Health clinician researchers with PhDs, in addition to Clinician Scientists (CS).

## AIM

## METHODOLOGY

### Needs Analysis

Conducted a detailed analysis of the needs of the different categories

- Clinician Scientists
- Clinician Investigators
- Clinician Innovators

### Award Criteria

Reviewed the award criteria for the different categories to be reasonable and yet competitive and robust

- ✓ Requirement of Career Development Plan

### Deliverables

Critically defined the deliverables for awardees

- ✓ Awardee shall apply for a national grant or an external grant within the duration of award period

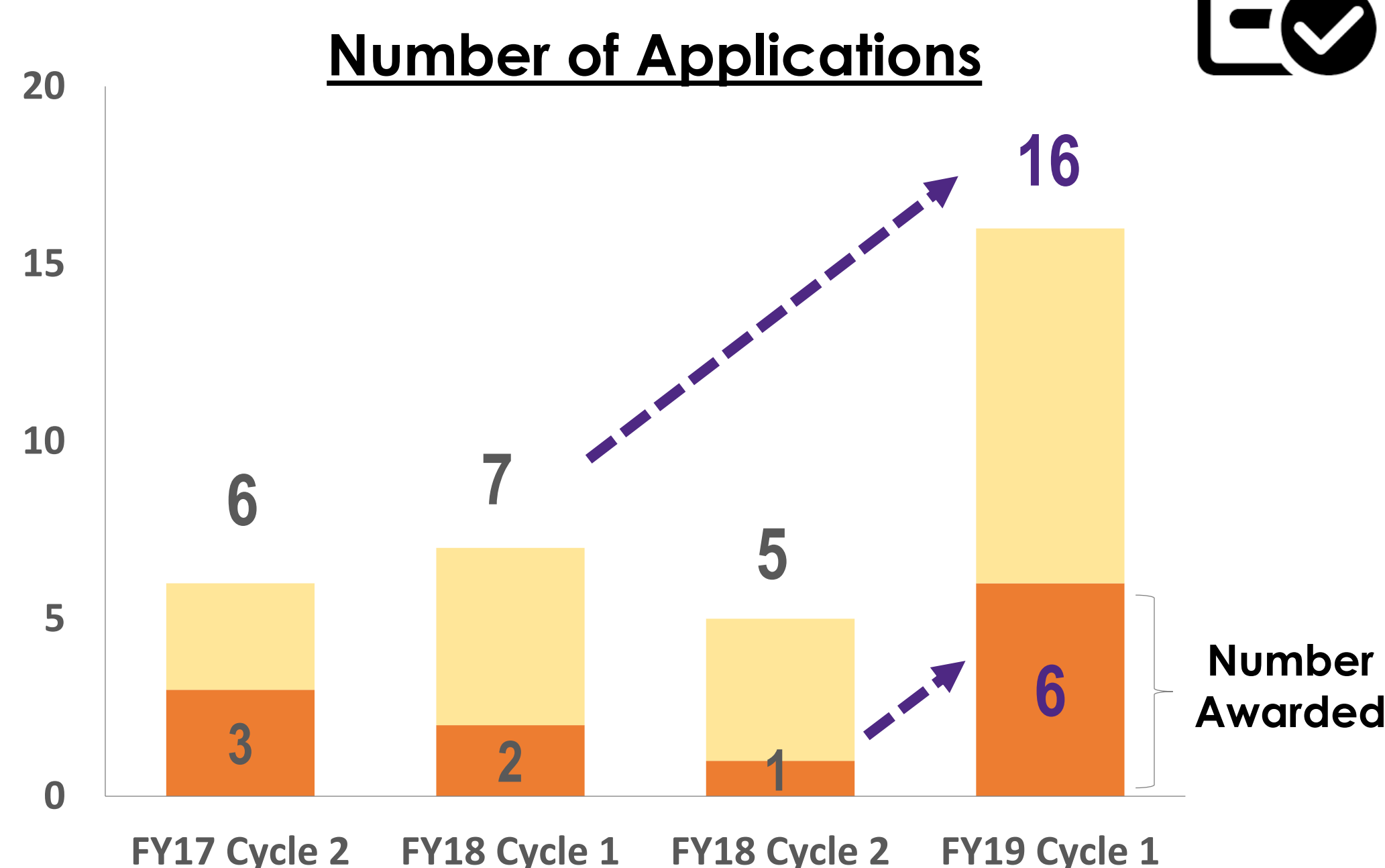
### Review Panel

Invited and ensured good representation of panel members with relevant expertise and experience

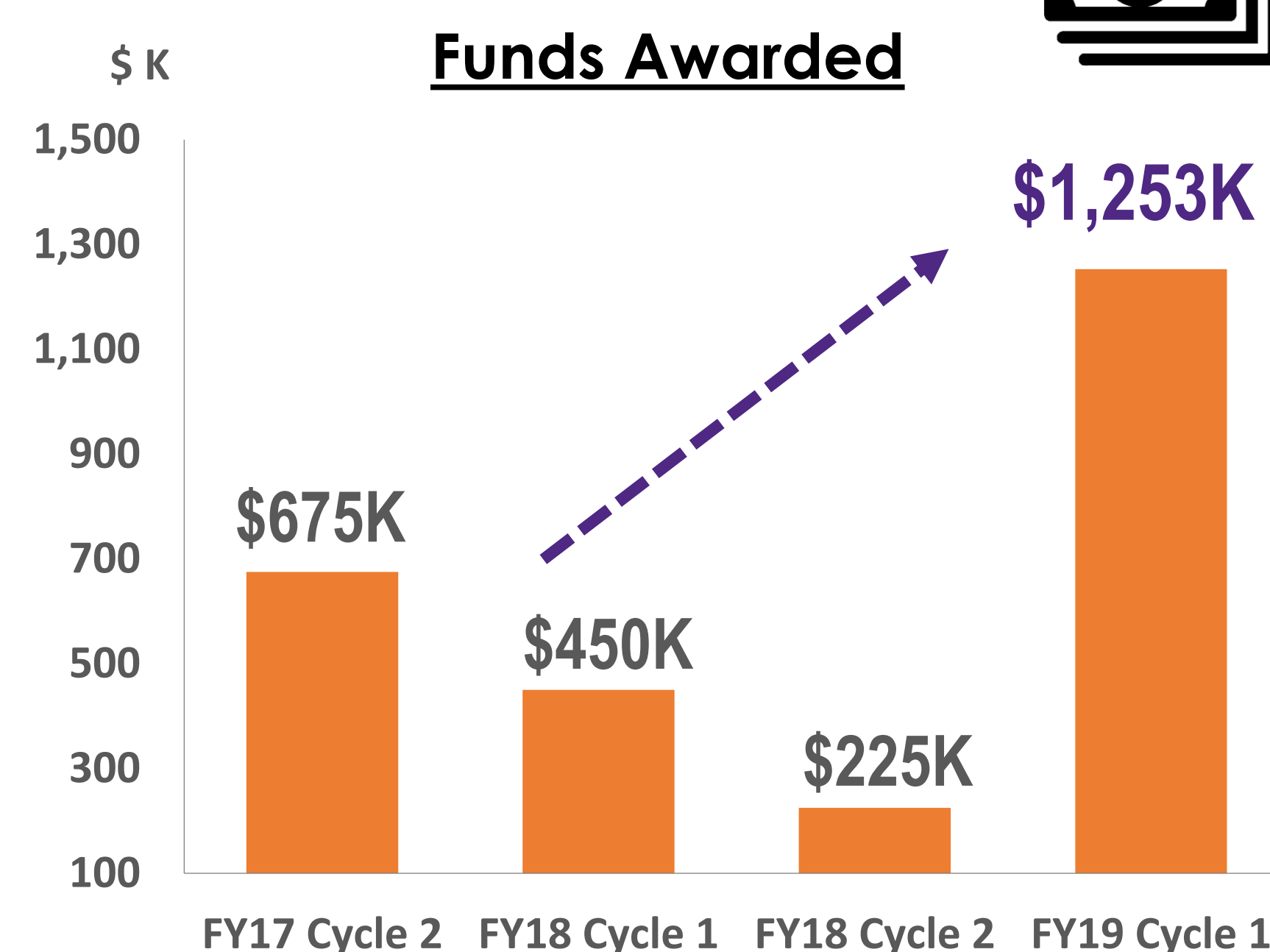
### Stakeholders

Engaged academic leaders, Academic Clinical Programmes (ACPs) and stakeholders at various forums (e.g. Academic Council, AM Coordination Meeting, etc).

## RESULTS



Number of Applications ↑



Better Utilisation of Funds

Encouraging to have a scheme in place to support not only Clinician Scientists but also other groups of Clinician Researchers

Good to embrace the broader spectrum of research capabilities and inclinations



## CONCLUSION



With the enhanced scheme, there was an increase in interest from ACPs. This also led to a better utilisation of funds, optimising the impact for the value invested. **The enhancements on the NCSS scheme have been effective in attracting budding CINs and CIVs to take a step forward to embark on a clinician researcher career.** Several areas of refinements would be made for future cycles, to further differentiate the three types of awards. Engagements with various stakeholders will continue to further fine-tune the scheme.

