



Singapore Healthcare Management 2017

Johnson & Johnson

VELCADE @ HOME

Partners from Singapore General Hospital:

Prof. William Hwang Ying Khee, Dr Sathish Kumar Gopalakrishnan, Dr Lim Yan Jiun, Dr Jordan Hwang Chung Cheng, Dr Susila D/O Perumal

Johnson & Johnson Partners:

Margareta Laminto, Goh Wee Lee, Madeline Ho, Joyce Lim, Loh Wei Fang, Yap Yin Yin

BACKGROUND

Multiple myeloma is a cancer that arises from abnormality of plasma cells at the bone marrow, which could lead to more clinical symptoms and medical complications such as recurrent infections, bone fractures and anaemia. (Source: <https://www.cancer.org/cancer/multiple-myeloma/about/what-is-multiple-myeloma.html>)

VELCADE is used for the treatment of multiple myeloma, and is administered once or twice a week with four injections per treatment cycle. Due to the nature of treatment, patients are required to make frequent visits to hospitals.

The burden of travel can cause inconvenience to patients, as well as caretakers of elderly patients who have to be absent from work to accompany patients to the hospitals. In addition, preparation time can take up to an hour in hospitals thus increasing waiting time for patients.

VELCADE @ Home is the first of its kind treatment delivery for cancer patients. With this new treatment delivery, hospitals are able to increase accessibility to healthcare, aligned with the Vision 2020 of the Ministry of Health.

METHODOLOGY

Johnson & Johnson partnered with Singapore General Hospital (SGH) to provide home administration to these patients through the homecare team. Home administration starts from the second cycle where patients can have their VELCADE injections done up to 3 times at home per cycle. A nurse will contact the patient on the same day of administering the injection.

Building An Effective Partnership Model:

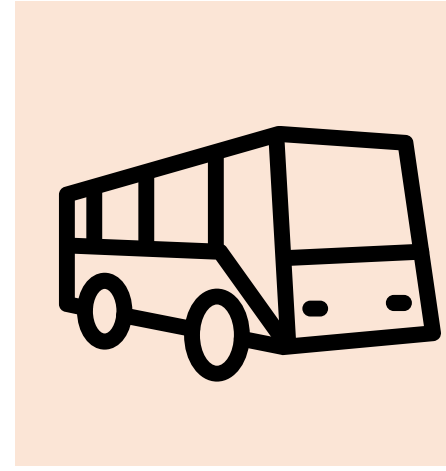
- Both parties built upon the common vision of doing what is best for the patient.
- Through various discussions, both parties decided to explore homecare for Velcade patients.
- The SGH homecare team administers VELCADE @ Home for patients and Johnson & Johnson subsidises the cost of transport of the homecare team.

Open Discussion on Operational Challenges:

- Both parties dedicated time discussing various implementation details of the project, particularly relating to optimal delivery of the treatment to the patients and at the patients' homes.

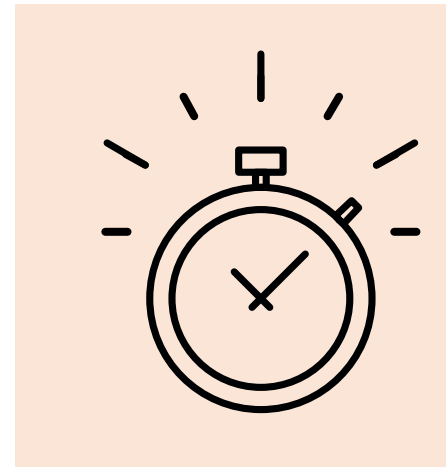
BENEFITS/ ACHIEVEMENT

BENEFITS TO PATIENTS:



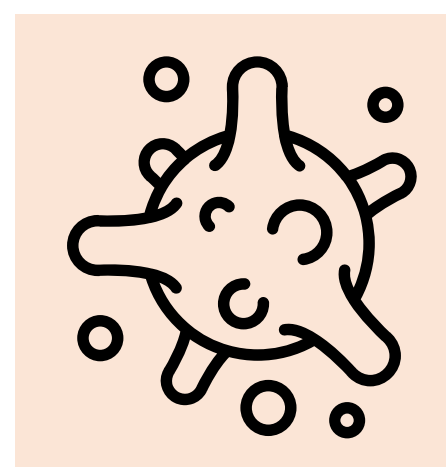
Big reduction in travel time

Patients do not have to endure traffic conditions to travel to hospitals for treatment. Caretakers no longer have to be absent from work to accompany patients.



Reduced waiting time

Before: Time taken to receive treatment can take up to an hour due to administrative processes and waiting time at the pharmacy.
After: Waiting time at the pharmacy is reduced.



Reduced risk of contracting diseases

Patients reduces the probability of contracting airborne diseases in the hospital.



Improved living environment

Nurses are able to assess the patient's home conditions thus identify and mitigate potential health risks.

BENEFITS TO HOSPITALS:



Increased capacity

By moving treatment delivery away from the hospitals, there is additional capacity in hospitals to serve more patients.



Increased patient satisfaction

Patients receive an excellent standard of care with increased convenience, thus increasing patients' satisfaction.

SPREAD & SCALABILITY

Aligned with the Ministry's vision of bringing care to the community, VELCADE @ Home is an innovative model for the delivery of treatment to cancer patients in their homes.

Johnson & Johnson will continue working closely with SGH to explore similar care delivery models for other therapeutic areas to benefit patients.