



Singapore Healthcare Management 2017

Dental Chair Performance Dashboard

Daniel Tay, Andrew Tan, Wong Sook Thow
Office for Service Transformation
Singapore Health Services Pte Ltd



Background

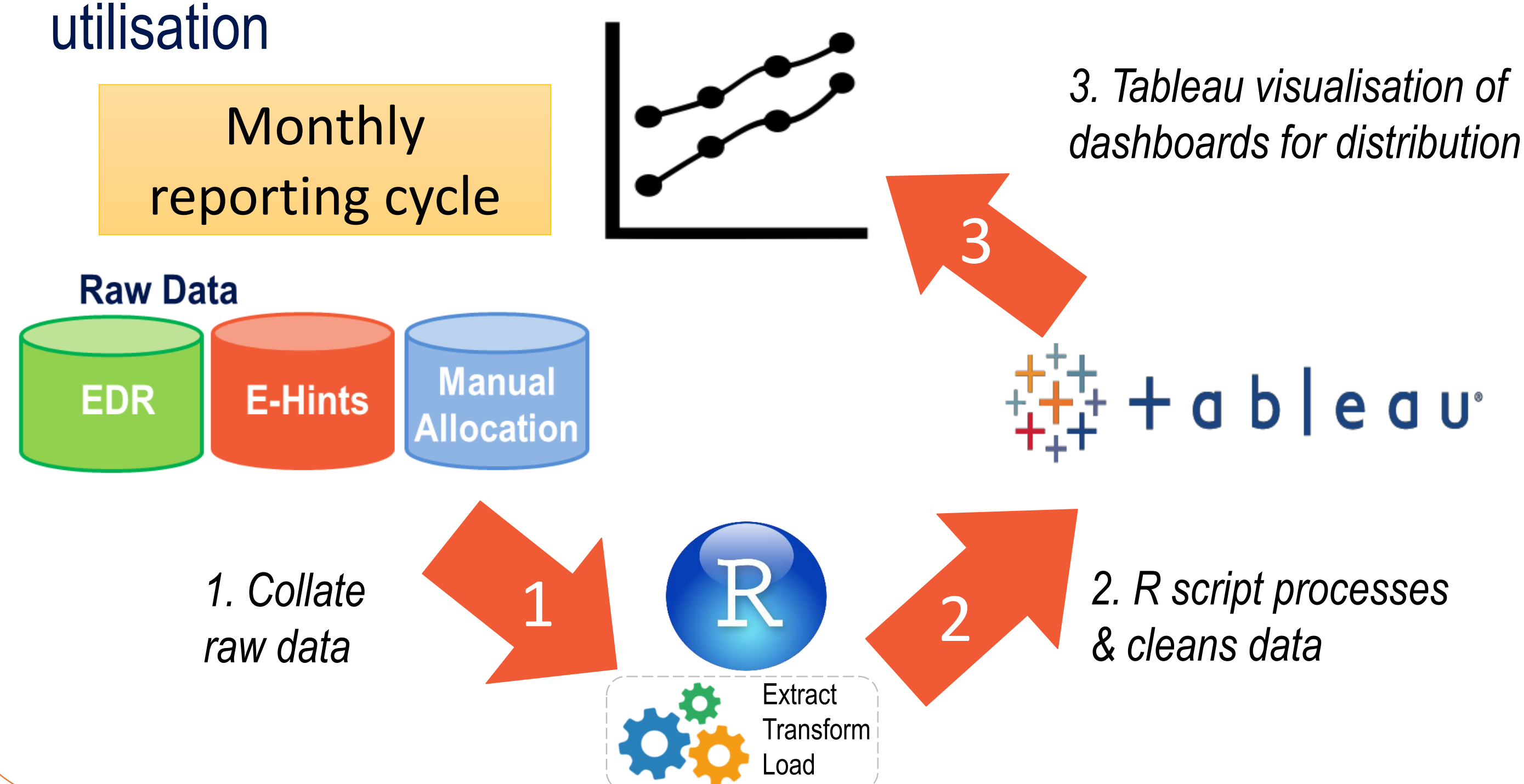
At the National Dental Centre Singapore (NDCS), despite a wealth of data stored across various systems, there was a dearth of analyses pertaining to dental chairs' performance. This information has long been requested by the Centre's management to guide decision-making, but it was previously difficult to obtain due to the challenges in manually generating such analyses. Due to these complexities, it was also often challenging to provide consistent & reproducible indicators so that performance can be reliably measured.

Aims

To develop a Business Intelligence (BI) tool on dental chair performance so as to facilitate data-driven decision-making, leading to improved performance & operational efficiency of dental chairs at NDCS

Methodology

- Engaged with NDCS management to identify KPIs relevant to the Centre & departments
- Finalised KPIs, developed data processing methodology & automated data cleaning into R code
- Direct clean data into Tableau to visualise KPIs
- Distribute dashboards to Management
- From information presented in the dashboards, management can then engage in meaningful data-driven discussions with departments so as to optimise and improve dental chair utilisation



Benefits

With the new dental chair dashboards...

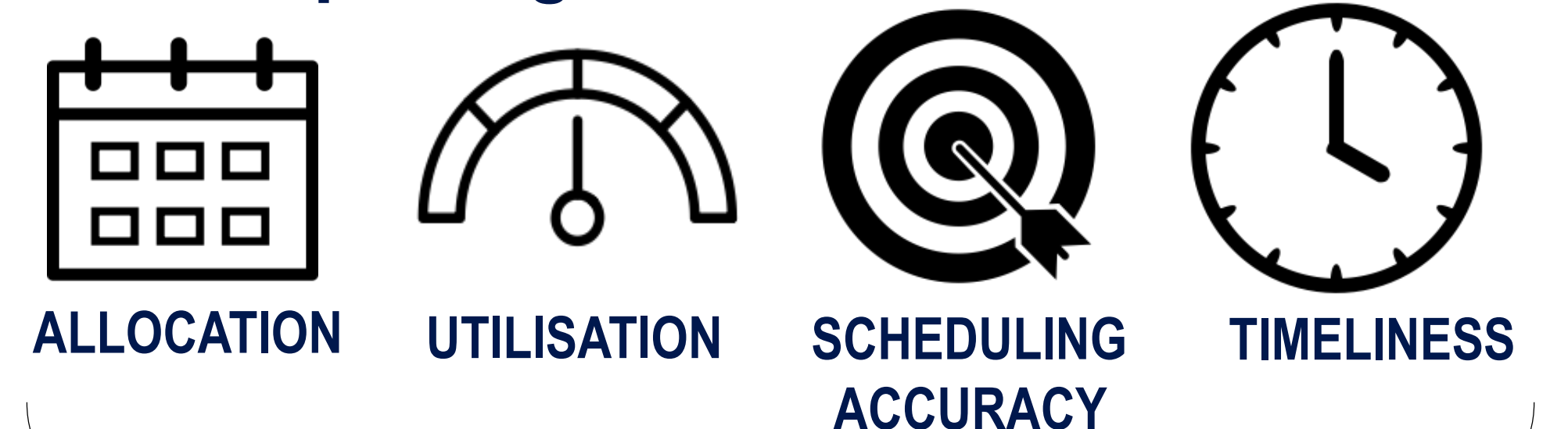
- Provides a quick overview of dental chair performance
- Improves ground awareness and sensitivity to the data
- Enables better management of resources
- Allows for nimble reaction to changes
- User-friendly and intuitive
- Faster data generation resulting in time-savings for staff
- Ensures reproducible and comparable charts



Results

Dashboard KPIs and Reporting Levels

4 pillars



Centre

17 indicators in 1 report

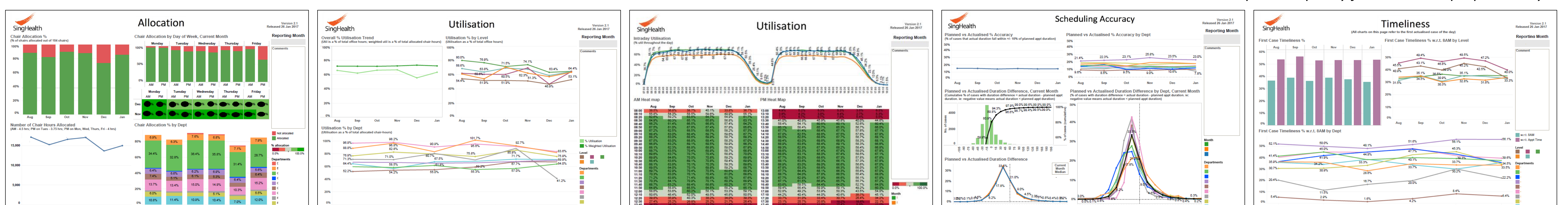
Department

10 indicators in 9 reports

Different set of indicators customised for Centre Management, as well as for department heads

Dashboards

note: dashboard mockup – data purely for illustrative purposes only



Conclusion

Making sense of the wealth of healthcare data can be a tedious and complex process, and yet it is an essential first step in guiding and informing policy-making. Without ferreting out & putting together the information residing in these varied systems and databases, it would be hard to practice evidenced-based decision-making.

Dashboards empower stakeholders with useful & succinct knowledge, as demonstrated by the successful development of the Dental Chair Performance Dashboard. These dashboards will increasingly be used to engage with departments in NDCS' improvement journey.